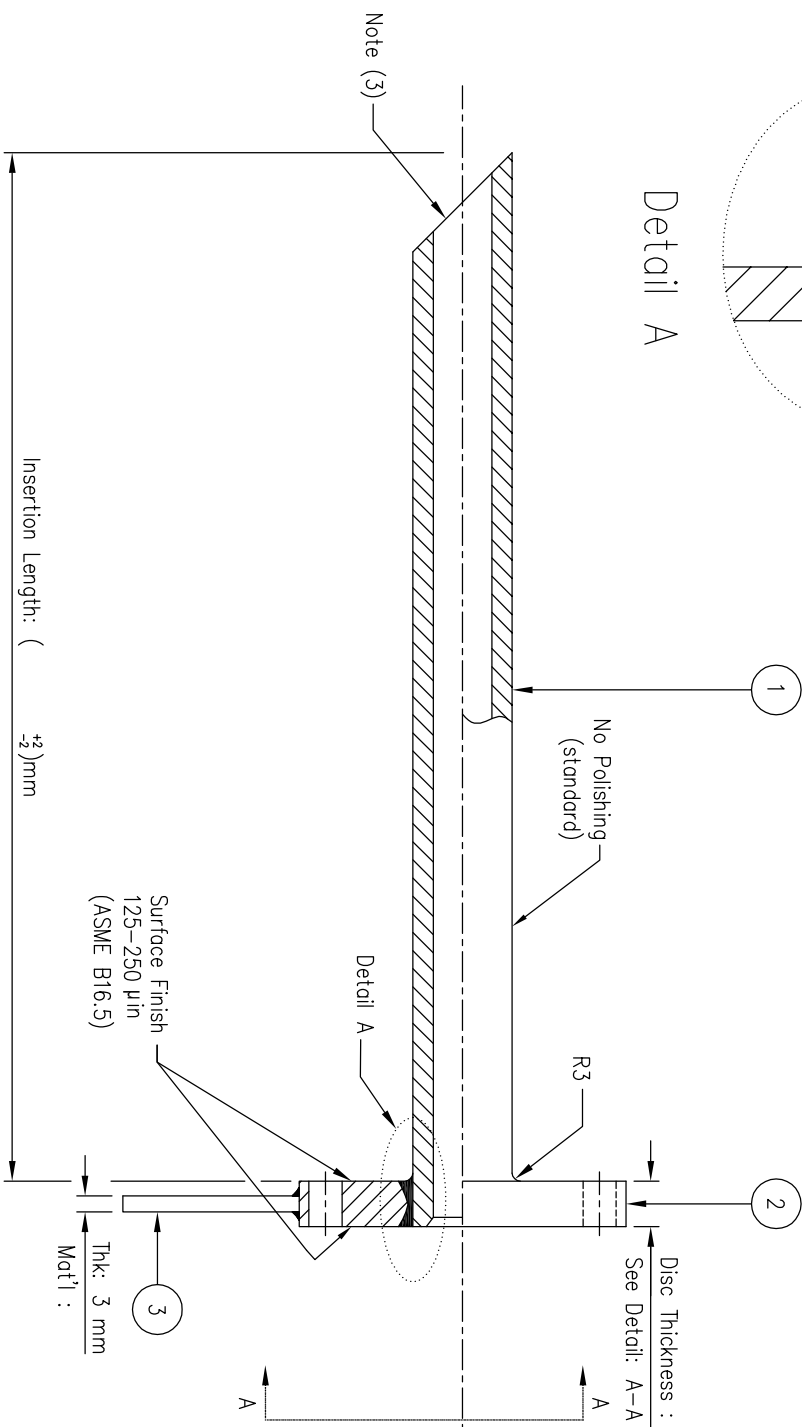
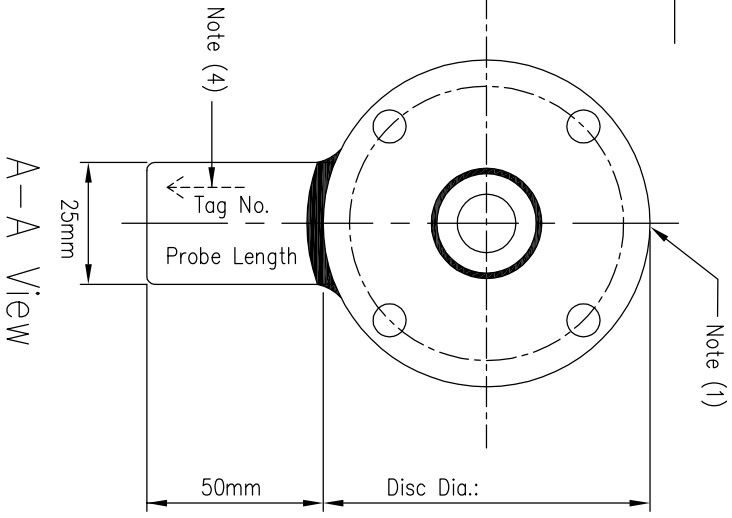


Full Penetration Weld
Note (2)



Punch Information[Note (1)]	
Description	Example
Job Reference	EJ1 XXXX
Material	XXXX
Connection	XXXX
Heat No.	HT XXXX
Stem Heat No.	S,HT XXXX
Serial No.	S,N XXXX



- Note (1) : Punch on the ring of the flange
- Note (2) : Full penetration weld requires to have min. pipe sch80.
- Note (3) : Clean internally from welding mark and dusts
- Note (4) : Direction of flow (Pls follow process flow direction)
- Note (5) : Number of bolt holes will depend on flange rating

Wafer Probe Flange Type									
3	Plate	Tolerance	Length < 1 mtr (±1mm), 1 mtr < Length (±2mm) < 2 mtr	ACEZ SENSING PTE LTD 28E PENJURU CLOSE, #01-04 SINGAPORE 609133 TEL: 65-6265 1588 FAX : 65-6264 3992 Website : www.acezsensing.com					
2	Disc plate	CUSTOMER							
1	Seamless Pipe	Waif Lin	Toe Toe Lwin	QUOTATION NO.					
S/N	DESCRIPTION	A.S PART NO.	MATERIAL	QTY.	REMARK	DRAWN BY	APPROVED BY	STD DWG NO.	ASSP-09-14