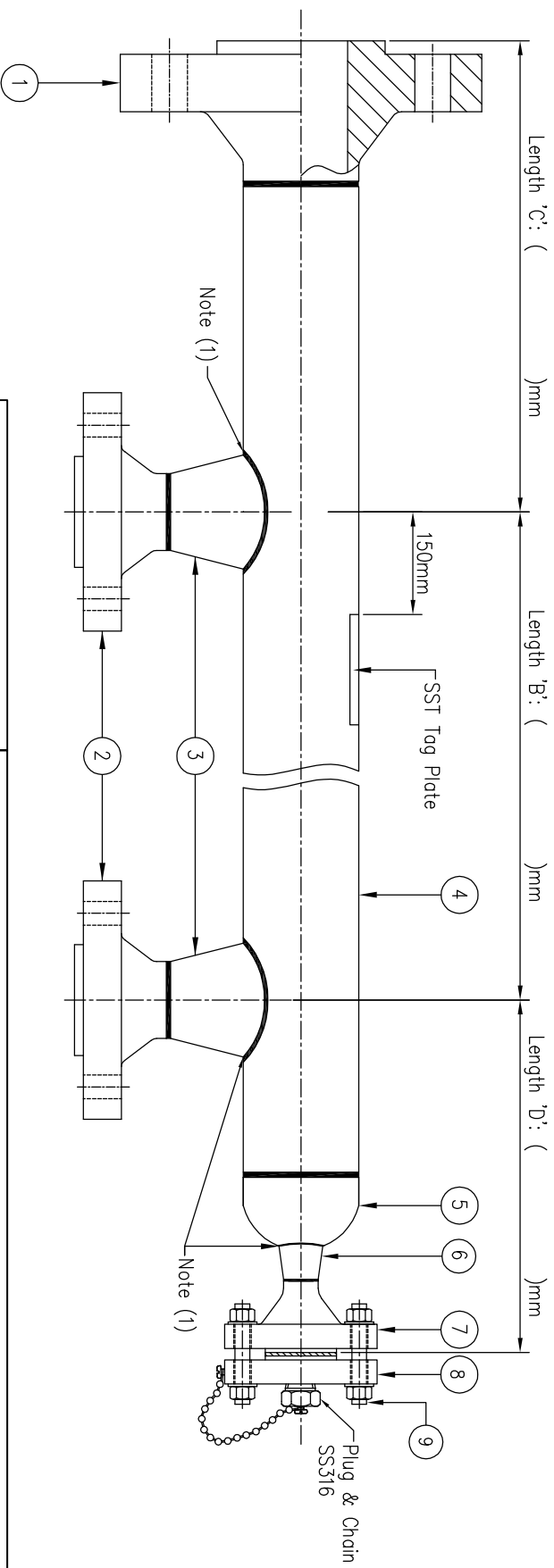
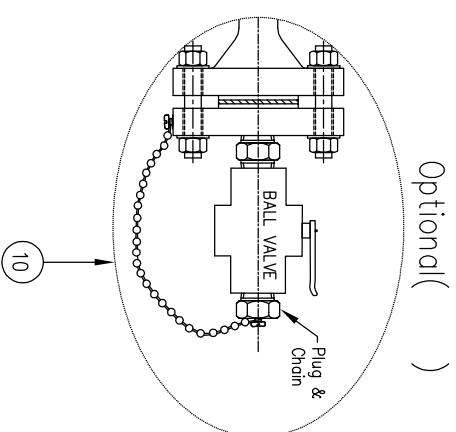


If in doubt – Ask

Dimensions in Millimeters Unless Otherwise Stated

Do Not Scale This Drawing

| Item | Description | Size | Material | Qty. |
|------|--|------|----------|-------|
| 1 | Top Flange (WN), RF Surface Finish | | | 1 |
| 2 | Side Flange (WN), RF Surface Finish | | | 2 |
| 3 | Weldolet | | | 2 |
| 4 | Seamless Pipe | | | 1 |
| 5 | End Cap | | | 1 |
| 6 | Weldolet | | | 1 |
| 7 | Bottom Flange (WN), RF Surface Finish | | | 1 |
| 8 | Bottom Blind Flange, RF Surface Finish | | SS316/L | 1 |
| 9 | Bolt with Nuts, Gasket, Plain Washers | | | 1 set |
| 10 | Bottom Blind Flange, RF Surface Finish c/w Ball Valve & Plug & Chain | | | 1 |



Note (1): Radiographic Testing(RT) is unable to perform these welding area

All welding must be full penetration weld.

Bypass Chamber c/w WNF

Tolerance Length < 1 mtr (±5mm), 1 mtr < Length (±8mm) < 2 mtr

ACEZ SENSING PTE LTD

28E PENJURU CLOSE, #01-04

SINGAPORE 609133

TEL: 65-6265 1588 FAX : 65-6264 3992

Website : www.acezsensing.com

| Temperature | Pressure |
|-------------|----------|
| | |

| CUSTOMER | Wai Lin | QUOTATION NO. |
|----------|---------|---------------|
| | | |

| DRAWN BY | APPROVED BY | DWG NO. | BC-S-01 |
|----------|-------------|---------|---------|
| | | | |