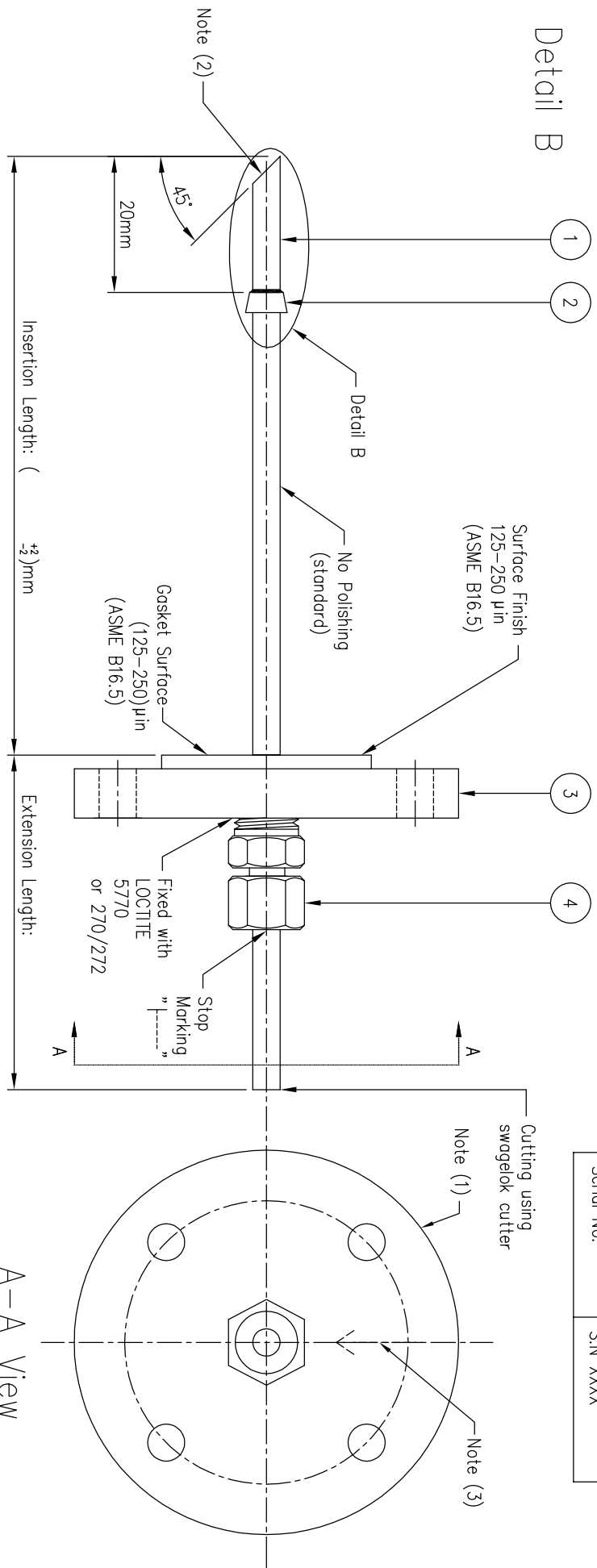


Punch Information[Note (1)]	
Description	Example
Job Reference	EUJ XXXX
Material	XXXX
Connection	XXXX
Length	XXXX mm
Tag No.	XXXX
Heat No.	HT XXXX
Stem Heat No.	S,HT XXXX
Serial No.	S,N XXXX



Note (1) : Punch on the ring of the flange
 Note (2) : Clean internally from welding mark and dusts
 Note (3) : Direction of flow (Pls follow process flow direction)
 Note (4) : Number of bolt holes will depend on flange rating

4		Packing Gland		Retractable Sample Probe	
3		Flange		Tolerance	
2		Ferrule		Length < 1 mtr (±1mm), 1 mtr < Length (±2mm) < 2 mtr	
1		Seamless Pipe		CUSTOMER	
S/N		DESCRIPTION		Wai Lin	
		A.S PART NO.		Toe Toe Lwin	
		MATERIAL		QUOTATION NO.	
		QTY.		STD DWG NO.	
		REMARK		ASSP-04-14	
<p>ACEZ SENSING PTE LTD 28E PENJURU CLOSE, #01-04 SINGAPORE 609133 TEL: 65-6265 1588 FAX : 65-6264 3992 Website : www.acezsensing.com</p>					