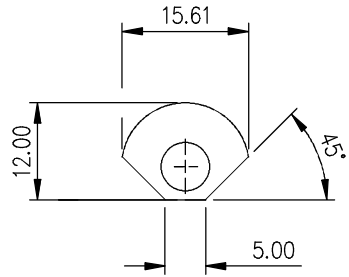


If in doubt – Ask

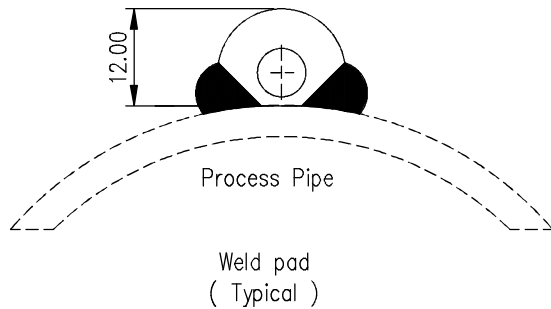
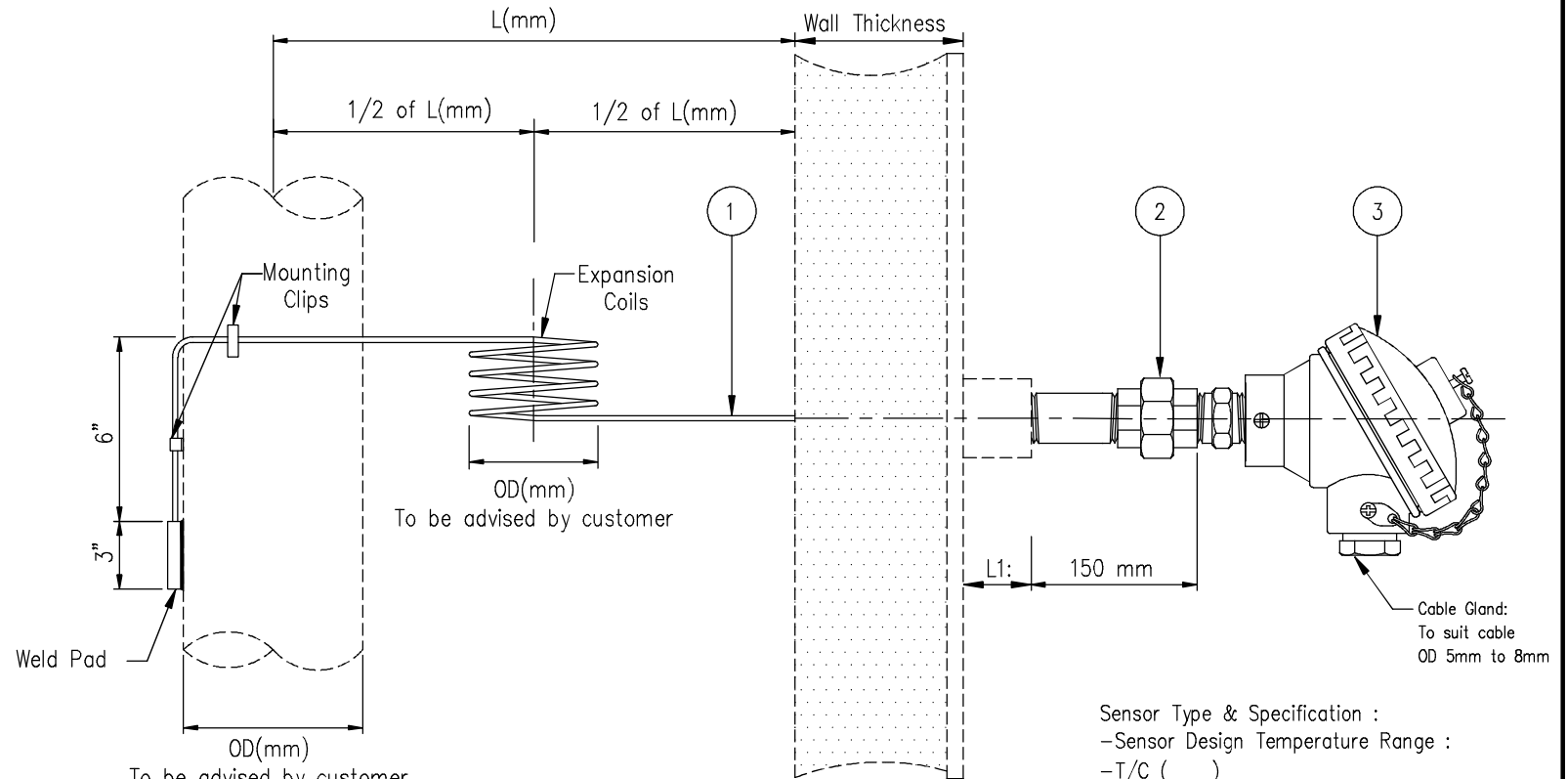
Dimensions in Millimeters Unless Otherwise Stated

Do Not Scale This Drawing

Enclosure Specification	
Area class	IP 68, Weather-proof
Type of paint	Epoxy
Colour	Blue()/ Silver()
Material	Die Cast Aluminium



Detail
Knife Shape
Weld Pad



Sensor Type & Specification :

- Sensor Design Temperature Range :
- T/C ()
- Ungrounded()/Grounded()
- Single()/ Dual()
- No. of Wire:()
- Tolerance: Class 1()/ Class 2(/)
- Standard: IEC 584()

Skin Temperature Sensor Assembly

3	Enclosure :	Refer to table above				Tolerance	Length < 1 mtr (±1mm), 1 mtr < Length (±2mm) < 2 mtr			ACEZ SENSING PTE LTD 28E PENJURU CLOSE, #01-04 SINGAPORE 609133 TEL: 65-6265 1588 FAX : 65-6264 3992 Website : www.acezsensing.com
2	Nipple-Union-Nipple Extension				CUSTOMER					
1	Sensor Sheath , ø mm				Wai Lin	Toe	Toe Lwin	QUOTATION NO.		
S/N	DESCRIPTION	A.S PART NO.	MATERIAL	QTY.	REMARK	DRAWN BY	APPROVED BY	STD DWG NO.		