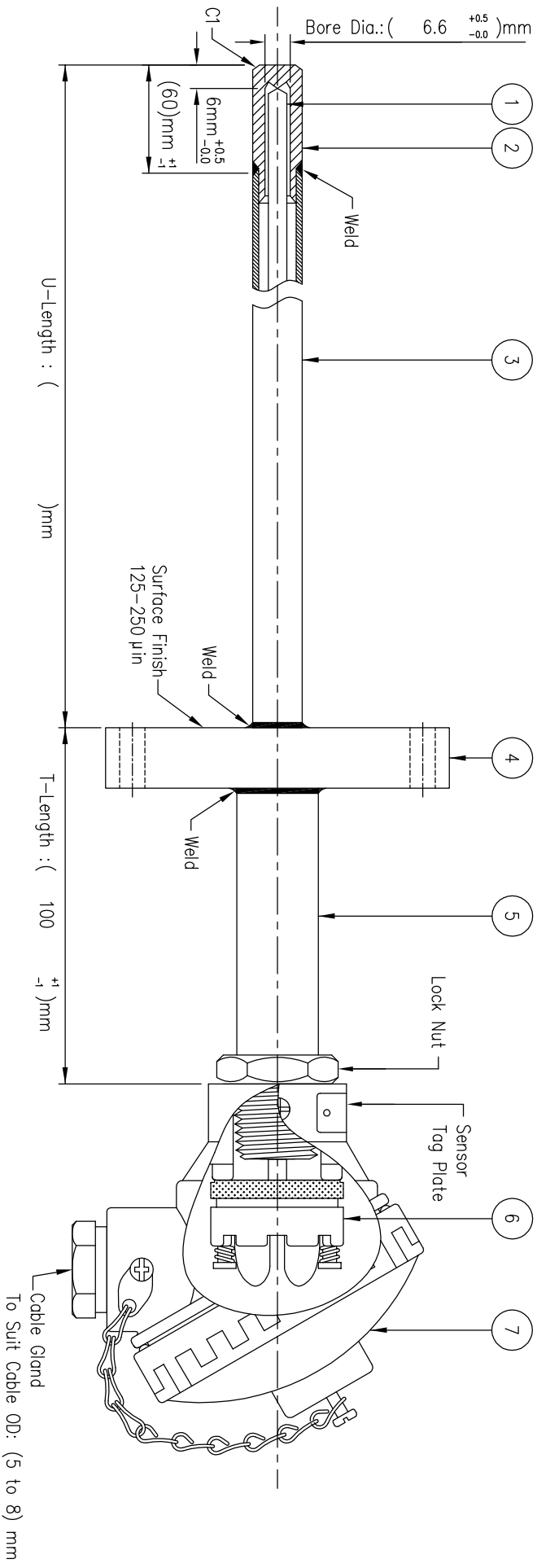


If in doubt – Ask

Dimensions in Millimeters Unless Otherwise Stated

Do Not Scale This Drawing



Note : This design for protection pipe/tube size above 10 mm.

7	Terminal Head	Die Cast Alu.	1	CH002, Weather Proof, Blue Colour
6	Head Mounted/DIN Transmitter		1	
5	Extension Pipe		1	Seamless : $\frac{1}{2}$ " Sch 40
4	Connection Flange (FF)		1	
3	Protection/Extension Pipe		1	
2	Drilled Bar Tip		1	
1	MI () / Tubel () : ϕ 6mm		1	
S/N	DESCRIPTION	MATERIAL	QTY.	REMARK

Model No TE30

Temperature Sensor Assembly c/w Protection Tube Thermowell

ACEZ SENSING PTE LTD

28E PENJURU CLOSE, #01-04

SINGAPORE 609133

TEL: 65-6265 1588 FAX : 65-6264 3992

Website : www.acezsensing.com

Tolerance Length < 1 mtr (± 1 mm), 1 mtr < Length (± 2 mm) < 2 mtr

CUSTOMER

Wai Lin

DRAWN BY

Length < 1 mtr (± 1 mm), 1 mtr < Length (± 2 mm) < 2 mtr

Wai Lin

APPROVED BY

STD DWG NO.

TE30-10

ACEZ SENSING PTE LTD

28E PENJURU CLOSE, #01-04

SINGAPORE 609133

TEL: 65-6265 1588 FAX : 65-6264 3992

Website : www.acezsensing.com